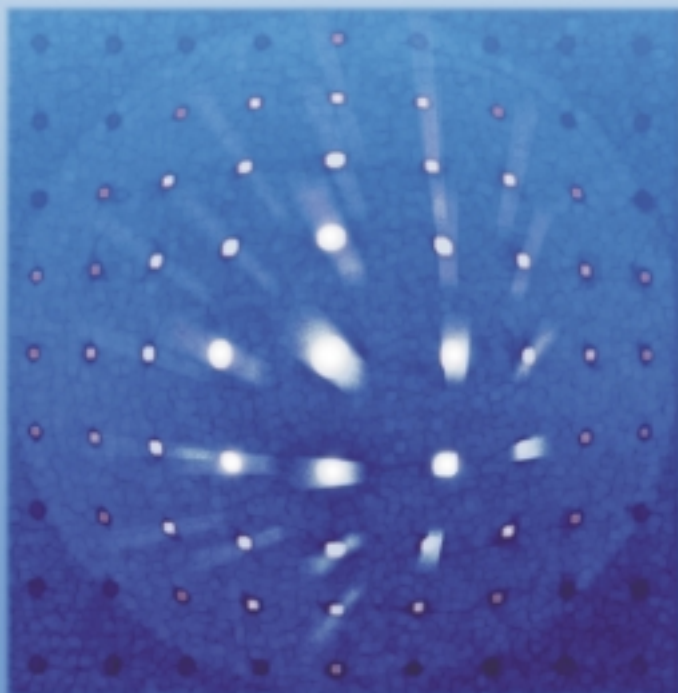




# ECLIM 2000

**XXVI European Conference  
on Laser Interaction with Matter**

**12–16 June 2000, Prague, Czech Republic**



## SECOND ANNOUNCEMENT



# Prague

Prague, the capital of the Czech Republic, is a town with a rich history extending over eleven centuries. It has been praised since ancient times not only because of its apparent beauty, but also because of its “genius-loci”. Its unique atmosphere stems not only from its location on the hilly banks of the Vltava river but also from numerous architectural styles rising throughout the millenium, and of course from its spry present life. Prague hosts a variety of cultural events and activities, amongst them the Prague Spring music festival, held each year in May. In 2000 the cultural life of the city will receive a new dimension hosting the pan-European project awarding Prague the title European City of Culture of the Year. The ECLIM conference may offer a unique opportunity for all participants to reveal the real beauty of the town and to experience its life.



Prague is inseparably connected with many well-known names of famous thinkers, writers, composers and poets who spent in its walls their lives or at least some parts of them. In late 16th century Yehuda ben Bezalel (better known as Rabbi Löw) created in Prague his Golem; Prague was a home-town of such giants of literature as Jaroslav Seifert who won the Nobel Prize in literature in 1984, or Karel Čapek who has brought the word “robot” into everyday speech; it saw Franz Kafka and Rainer Maria Rilke walking on its streets; it gave inspiration to composers like Antonín Dvořák and Wolfgang Amadeus Mozart.

Prague has always been a fruitful place for science too. It stood at the birth of modern astronomy when Tycho de Brahe joined Prague’s Imperial court in 1599 and his precise astronomical tables made it possible for Johannes Kepler, during his stay in Prague from 1600 to 1612, to discover the laws of planetary motion. Two centuries later Christian Doppler, professor of mathematics at the Prague Technical University (1835–1847), formulated here his famous principle. Ernst Mach, professor of experimental physics at the Prague University from 1867, spent in Prague nearly thirty years and contributed to the development of several physical disciplines. Albert Einstein was without doubt the most famous physicist who worked and lectured in Prague, from 1911 to 1912. In his own words he found here “the necessary concentration for giving a more precise form to the basic idea of the general theory of relativity”. Amongst inventions made in Prague in the twentieth century are polarography from 1920s, for which Jaroslav Heyrovský received the Nobel Prize in 1957, and soft contact lenses from transparent hydrogels, first synthesized in the early 1960s by Otto Wichterle.

We hope that Prague as the host city of the ECLIM conference will provide all participants a good basis, not only scientific but also cultural and social. And that its atmosphere will bring inspiration for you like it has already been for many others before.

## Conference Site

The ECLIM 2000 conference will take place in the Hotel Pyramida which is less than ten minutes’ walk from Prague Castle. In June it can be very pleasant to walk to the nearby parks in the Strahov and Petrin hills, where visitors may relax or visit the gothic monastery and other monuments and a 60-m high view tour, or from which they may descend downtown Prague by a funicular.

Hotel Pyramida is situated near the way from the Ruzyne airport to downtown Prague, and is easily accessible by the municipal public transport.

# ECLIM 2000

The 26th European Conference on Laser Interaction with Matter ECLIM 2000 will be held from 12 to 16 June 2000 in the Pyramida Hotel, Bělohorská 24, 169 01 Prague 6.

## International Scientific Committee

N. G. Basov (Russia)  
A. Caruso (Italy)  
S. Eliezer (Israel)  
E. Fabre (France)  
M. Kálal (Czech Republic)  
J. Meyer-ter-Vehn (Germany)  
P. A. Norreys (United Kingdom)  
Z. Skłodanowski (Poland)  
G. Velarde (Spain)

## Local Scientific Committee

M. Kálal (Chairman)  
B. Rus (Vice-Chairman)  
L. Soukup (SPIE/CS)  
K. Rohlena, M. Šiňor, J. Limpouch, L. Drška, P. Fiala, L. Juha, K. Jungwirth,  
B. Králiková, J. Krása, G. Lončar, L. Pína, M. Vrbová, T. Mocek

## Scope of the Conference

The ECLIM conferences have been held since the mid-1960, and are a major meeting point for the scientific community working on inertial confinement fusion by lasers, and related topics. ECLIM 2000 will take place on the advent of the new millennium and is intended to continue and deepen this tradition. Its goal is to provide an overview of state-of-the-art projects in inertial confinement fusion by lasers, and to cover the most significant issues in both experimental and theoretical research in high-power laser-matter interaction.

ECLIM 2000 will cover both traditional and new topics in laser-matter interaction, namely

- ♦ **Inertial Confinement Fusion**
- ♦ **Plasma Instabilities and Parametric Processes**
- ♦ **Ultrashort, Ultraintense Laser-Matter Interactions**
- ♦ **Numerical Simulations of Laser Produced Plasmas**
- ♦ **X-Ray and Particle Laser-Plasma Sources**
- ♦ **Nuclear Processes in Laser Produced Plasmas**
- ♦ **High-Power Laser Engineering**
- ♦ **New High-Power Laser Facilities**

ECLIM 2000 is organized jointly by

**Czech Technical University in Prague**  
**Academy of Sciences of the Czech Republic**

and supported by

**International Society for Optical Engineering (SPIE)**

Comprehensive information about the ECLIM 2000 may be found on the web site

**<http://eclim.fjfi.cvut.cz>**

# Call for Papers and Submission of Abstracts

The participants wishing to present contributed papers are invited to submit a one-page abstract. Abstracts prepared according to the enclosed guidelines should be sent by e-mail to **abstract@eclim.fjfi.cvut.cz** by **March 1, 2000**. The accepted document format is TeX, LaTeX, RTF, Word, plain text. If you wish to submit the abstract in any other format, please contact the organizers. The e-mail should be accompanied by fax (+420-2 688 07 29) if the abstract involves math formulae, figures, or other graphic objects.

The Local Scientific Committee assumes the right to select an appropriate number of presentations and divide them between the individual oral and/or poster sessions. Authors will be notified of the acceptance of their abstracts and of the assignment and time of their presentations in sessions in mid-March.

The abstract should start with the title, authors, affiliation and mailing address. The title should be centered, sized 14pts. Please underline the name of the presenter and include his or her e-mail. Times Roman font, size 12pt, is preferred. The abstract may contain references. The abstract should fit a single page A4, within an area 150 mm × 210 mm.

## Example:

### Survey of laser-plasma research

P. A. M. Dirac<sup>1</sup>, A. Einstein<sup>2</sup>, W. Pauli<sup>2</sup>, and R. Feynman<sup>2</sup>

<sup>1</sup> University of Oxford, Oxford OX1 3PU, U. K.

e-mail: [dirac@quantum.oxford.ac.uk](mailto:dirac@quantum.oxford.ac.uk), fax: (042-2) 526 58 02

<sup>2</sup> Institute for Advanced Studies, Princeton, New Jersey 08544, U.S.A.

(**Note:** e-mail and fax should be mentioned for the presenting author, his or her name underlined)

## Contributed Papers

The time available for contributed oral presentations will be announced in the 3rd Announcement. Computer aided presentations (HTML, PDF, PowerPoint, etc.) will be possible provided the organizers will be able to meet the demands of individual authors on the required software (see the **Registration Form**).

The posters will be displayed on panels 150 cm wide and 120 cm high.

## Proceedings

A SPIE Conference Proceedings Series volume will serve as the ECLIM 2000 Proceedings. Camera ready papers and their electronic versions should be submitted to the Local Scientific Committee during the first day of the Conference. **Instructions for Authors** will be distributed along with notification of the acceptance of their papers in mid-March and will be posted on the web site <http://eclim.fjfi.cvut.cz>.

Following tradition, authors will also have the opportunity to submit full-length papers to the special ECLIM issue of the Laser and Particle Beams journal. More information will be provided in the 3rd Announcement.

## Post Deadline Papers

While not encouraged, submission of abstracts after **March 1, 2000** will be possibly taken into consideration with two restrictions:

- ♦ The corresponding papers will be attributed the **poster** form of the presentation.
- ♦ Such abstracts might not find their way in the Book of Abstracts.

On the other hand:

- ♦ Manuscripts of the corresponding papers will be considered as a regular contribution for the publication in the ECLIM 2000 SPIE Conference Proceedings Series volume (provided they will meet all the other criteria).
- ♦ These abstracts will be included in the accompanying ECLIM 2000 CD-ROM.

# Registration

You may register either by sending the attached **Registration Form** together with the **Accommodation & Tour Reservation Form** to ICARIS Ltd., Conference Management, **by March 1, 2000**. You may also submit these forms electronically through the ECLIM 2000 web site <http://eclim.fjfi.cvut.cz>.

## Registration Fees

The **registration fee** is **USD 430**. This fee entitles participants to attend the Conference sessions and to receive the Book of Abstracts, a copy of the SPIE Conference Proceedings, and the ECLIM 2000 CD-ROM. It further includes morning and afternoon refreshments during the Conference, and an informal Welcome party, Concert and the Conference Dinner.

The registration fee for **undergraduate and graduate students** is **USD 190**. Please apply to the Local Conference Committee in writing along with the **Registration Form**, including a letter of recommendation from your academic supervisor and an additional copy of the abstract, **by March 1, 2000**.

The registration fee for **accompanying persons** is **USD 40**. This fee covers morning and afternoon refreshments during the Conference, the Welcome party, the Concert, as well as the service charge for the arrangement of the accompanying person's program. The service charge does not include the conference dinner, entrance fees, theatre and concert tickets.

	Before March 31, 2000	After March 31, 2000
<b>Full registration fee</b>	<b>430 USD</b>	<b>480 USD</b>
<b>Students fee</b>	<b>190 USD</b>	<b>220 USD</b>
<b>Accompanying persons</b>	<b>40 USD</b>	<b>40 USD</b>

## Payment

After registering, participants will receive notification of payment by March 15, 2000. The nominal payment must be received **by March 31, 2000**. Payment can be made in U.S. dollars, convertible currencies including Czech Crowns, in the official exchange rate at the date of payment.

There are three possible forms of payment:

- ♦ International money transfer or bank transfer made to:

**Bank Austria Creditanstalt**  
**Revoluční 15**  
**110 15 Praha 1**

Account name: **ICARIS**  
Account number: **504 738 023**  
Bank connection (Swift Code): **CABVCZPX**

**IMPORTANT: the transfer order should mention the NAME OF THE PARTICIPANT**

**The payment must be free of bank charges to the receiver**, i.e., all bank charges for effecting the international money transfer must be met by the remitter, **including** those imposed by the beneficiary's agents (Bank Austria, Prague). **This must be explicitly stated** when authorizing the international money transfer order.

- ♦ Checks issued to ICARIS Ltd., Conference Management, sent in a registered letter to ICARIS Conference Management (please see back page for address). This form of payment is preferred.
- ♦ Visa, Eurocard/MasterCard, Diners Club and JCB.

## Cancellation

Notification of all cancellations must be sent **in writing** to the ICARIS Ltd., Conference Management. Cancellations received **before May 28, 2000** will receive a refund of the conference fee minus USD 50 charge.

Cancellations received **after May 28, 2000** will not receive a refund, but the printed Conference materials and the ECLIM 2000 CD-ROM will be mailed to the non-participant.

Cancellation of the hotel booking, excursion and of the conference dinner made **before April 30, 2000** will receive a full refund. Later cancellations, up to 14 days before the conference, will receive 70 % refunding; cancellations made **after May 28, 2000** will not receive a refund.

## **Social Programme & Tours**

An informal **Welcome Party** will be held on Monday, June 12, 2000.

A **Festive Conference Dinner** will take place on Thursday, June 15, 2000.

A **Concert** of classical music will be held on Wednesday evening in a historical place in the Old Town.

**Conference excursions** will be possible to several interesting places. The price for the excursions is not included in the registration fee. Participants who would like to take part in an excursion are asked to fill the **Accommodation & Tour Reservation Form**.

## **Language**

The official language of the conference is English.

## **Board**

The breakfast is included in the price of accommodation.

Lunches can be served to the participants a la carte in the **Pyramida hotel**; participants may also have lunch in a number of nearby restaurants.

Coffee, tea and soft drinks will be served during the morning and afternoon coffee breaks. Further refreshments will be available at the buffet at the conference site.

There are various possibilities to take dinner either in the **Pyramida hotel** or in numerous restaurants downtown.

## **Accommodation**

In case of interest, your hotel reservation will be made according to your **Accommodation & Tour Reservation Form**. Reservations will be made on the basis of "first come first served". If we will not be able to fulfil your order, you will be proposed accommodation in another hotel of the same price category.

## **Parking**

A guarded parking place is available on the grounds of the **Pyramida Hotel**.

## **Computer and Internet Centre**

A computer conference centre with access to the Internet will be available to the ECLIM 2000 participants, in connection with printing and copying facilities.

## **Technical Excursion**

All conference participants are invited to visit a newly built PALS (Prague Asterix Laser System) centre, recently incorporated in the Transnational Access to Research Infrastructure EU scheme. The major experimental resource at the PALS centre is the high-power iodine laser system Asterix IV, developed and previously operated at MPQ Garching. The newly assembled system at PALS is presently commissioned together with several upgrades concerning notably the target facilities, and in the time of ECLIM it is due being available to users. The conference attendants will obtain detailed information on the excursion to the PALS centre at the registration desk. The excursion will take place the last day of the conference.

## **Visa**

Most of ECLIM 2000 participants will not need a visa to enter the Czech Republic; this is for instance true for participants from majority of European countries, and for the USA, Canada and Japan.

If you need a visa to enter the Czech Republic, the Local Organizing Committee will be pleased to send you an official letter confirming your participation at the ECLIM 2000.

# **Important dates**

<b>Registration and Abstracts</b>	<b>March 1, 2000</b>
<b>Payments</b>	<b>March 31, 2000</b>
<b>3rd Announcement with the preliminary program</b>	<b>May 15, 2000</b>
<b>Full papers for SPIE Proceedings</b>	<b>June 12, 2000</b>

# Conference Organization

## Scientific Issues, Program and Abstracts

### **ECLIM 2000 Secretary**

Institute of Physics  
Academy of Sciences of the Czech Republic  
Na Slovance 2  
182 21 Prague 8  
Czech Republic

Fax: (+420-2) 688 07 29

E-mail: [eclim@fzu.cz](mailto:eclim@fzu.cz)

Web site: <http://eclim.fjfi.cvut.cz>

## Registration, Accommodation, Payment

### **ICARIS, Ltd.**

#### **Conference Management “ECLIM”**

Nám. Dr. Holého 8  
180 00 Prague 8  
Czech Republic

Phones: (+420-2) 683 61 00,  
(+420-2) 684 70 59,  
(+420-2) 684 43 04

Fax: (+420-2) 684 08 17

E-mail: [icaris@bohem-net.cz](mailto:icaris@bohem-net.cz)

